

Office/Showroom/Warehouse Building for
16641 N 91st St, McDowell Mountain Business Park

SALE ±34,757sf



FEATURES

- Beautiful Class "A" office buildout, with floor-to-ceiling glass in offices. Kitchen area, outdoor patio.
- Located in the prestigious McDowell Mountain area, with beautiful landscaping and mountain views.
- Bullpen/Showroom area.
- Warehouse has bay doors and truckwell.
- 82 Total parking spaces (3 handicap)
- Excellent access to Loop 101 Freeway

For more information or to request a showing, call Randy Shell at 480.443.3992



Randy Shell
Designated Broker

Office 480.443.3992
Cell 480.694.4100

randy@shellcommercial.com



480.443.3992

shellcommercial.com

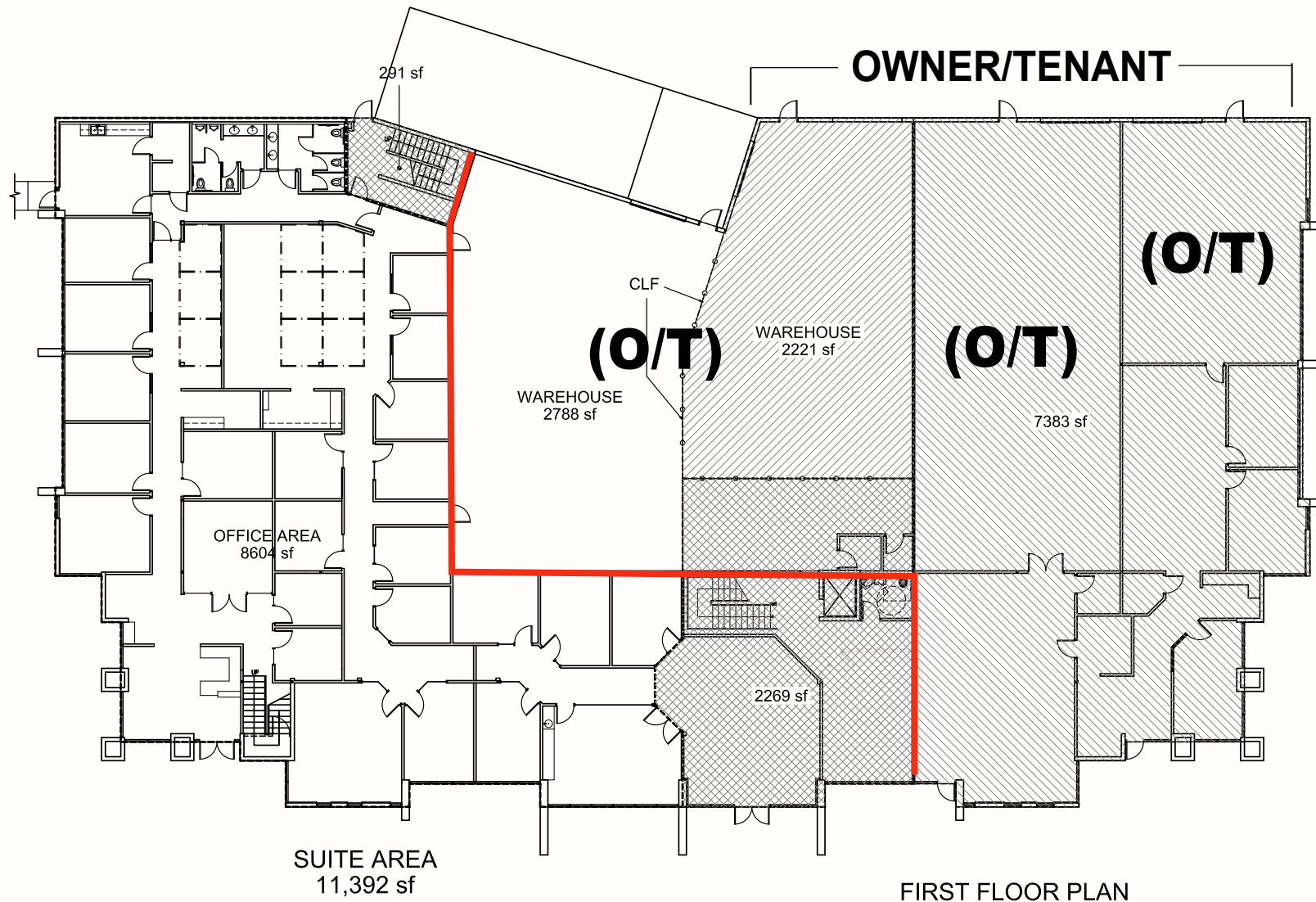
16410 N 91st Street, Suite 112 Scottsdale, AZ 85260



McDowell Mountain Business Park

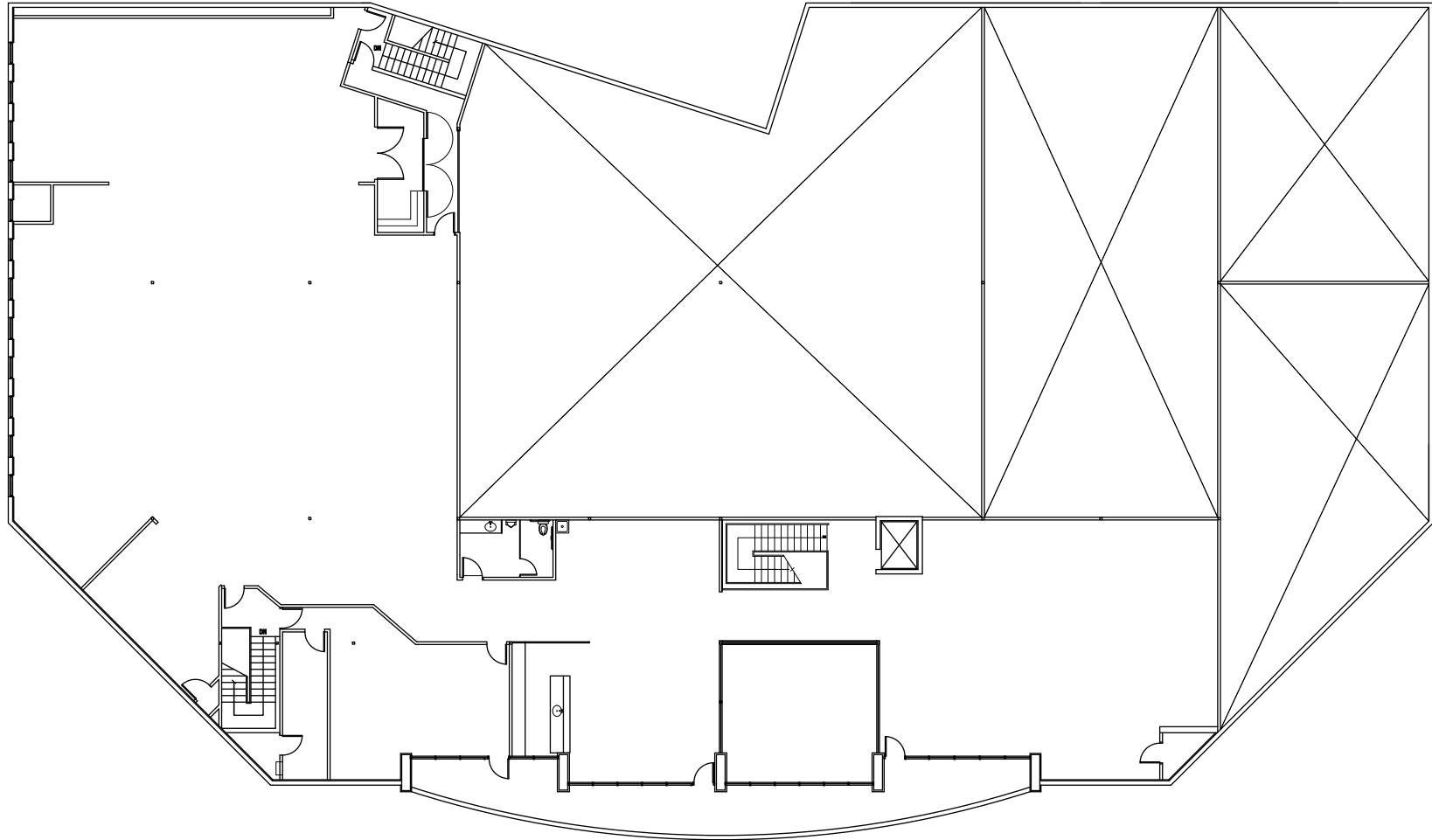
FLOOR PLAN

First Floor



FLOOR PLAN

Second Floor



SECOND FLOOR
11,926± SF