

Office Suite
FOR LEASE

±1,878 SQ. FT.

McCormick Executive Center

8070 E Morgan Trail | Suite 120 | Scottsdale, Arizona 85258



Upgraded finishes
make this first floor
suite highly appealing!

Features:

- Spacious reception/lobby
- Five (5) offices
- Shower and restroom in suite
- Common area restroom available
- Plenty of cabinets
- Lots of windows provide natural light!
- Beautiful Central Scottsdale location
- Covered parking available

For further property information or to schedule a tour please contact:



John Quatrini
Associate Broker
C 602.859.0506
O 480.443.3992

john@shellcommercial.com



Suzanne Enright
Senior Associate
C 602.471.2981
O 480.443.3992

suzanne@shellcommercial.com



Serving Scottsdale Airpark & Greater Phoenix

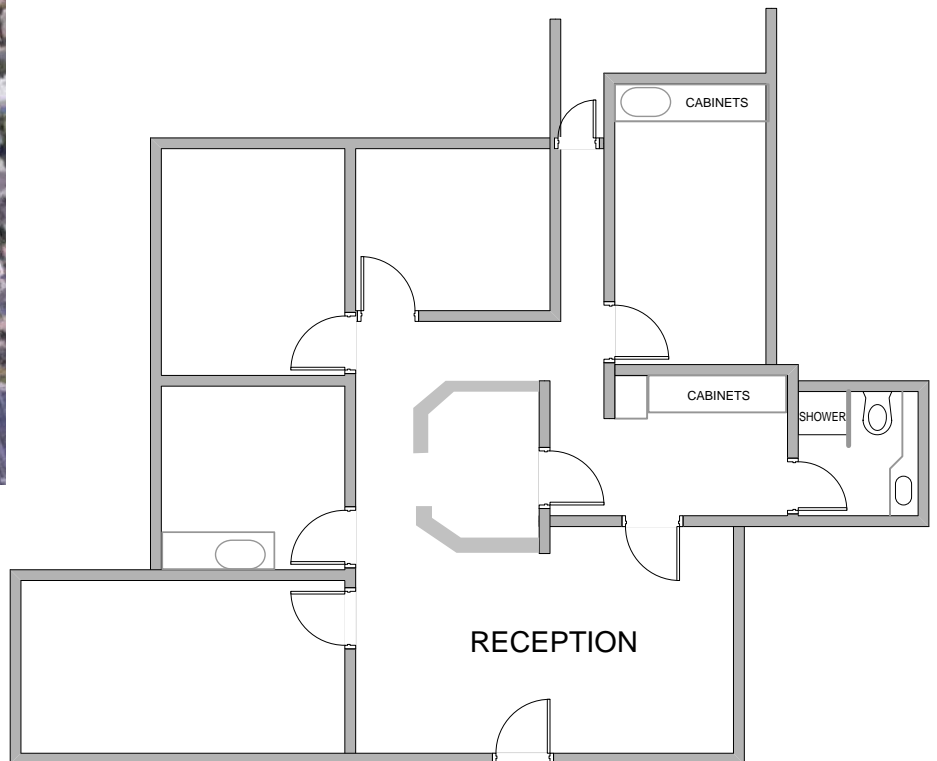
480.443.3992 shellcommercial.com



16410 N 91st Street | Suite 112 | Scottsdale, Arizona 85260



The above is subject to prior sales and leasing. This information has been secured from sources we believe to be reliable, but we make no representation or warranties, expressed or implied as to the accuracy of this information.



NOT TO SCALE

All information furnished regarding property for sale, rental or financing is from sources deemed reliable, but no warranty or representation is made to the accuracy thereof and same is submitted to errors, omissions, change of price, rental or other conditions, prior to sale, lease or financing or withdrawal without notice. No liability of any kind is to be imposed on the broker herein. This information has been secured from sources deemed reliable, however, we make no warranties as to its accuracy.