

Office Space for LEASE ±1,327 SF

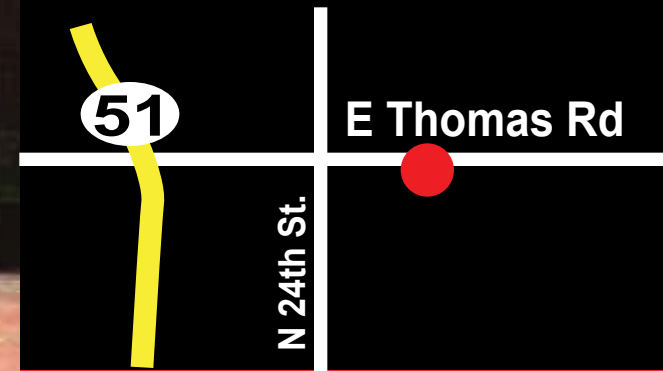


FEATURES

Located in an attractive office complex with an elegant lobby and lush landscaping!

Twelve minutes from Phoenix Sky Harbor Airport, this first floor office includes the following features:

- Reception with built-in desk
- Three (3) offices + conference/office
- Kitchenette



2601 E Thomas Road | Suite 117 | Phoenix, Arizona 85028

For more information or to schedule a tour, please contact John or Suzanne:



John Quatrini
Associate Broker
C 602.859.0506
O 480.443.3992
john@shellcommercial.com



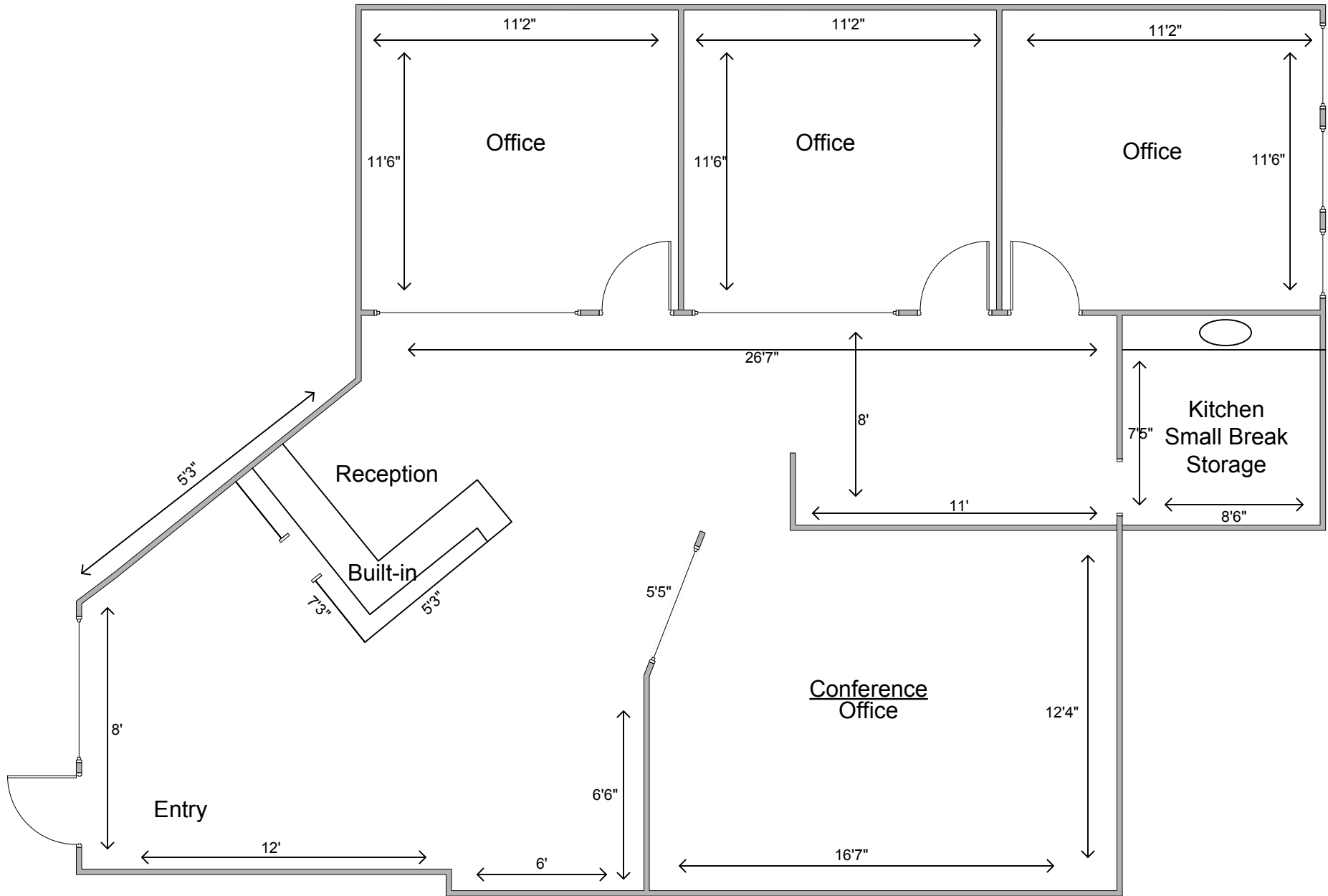
Suzanne Enright
Sales/Leasing Real Estate Agent
C 602.471.2981
O 480.443.3992
suzanne@shellcommercial.com



480 443 3992
shellcommercial.com

2601 E Thomas Road | Suite 117

±1,327 RENTABLE SQ. FT.



NOT TO SCALE

All information furnished regarding property for sale, rental or financing is from sources deemed reliable, but no warranty or representation is made to the accuracy thereof and same is submitted to errors, omissions, change of price, rental or other conditions, prior to sale, lease or financing or withdrawal without notice. No liability of any kind is to be imposed on the broker herein. This information has been secured from sources deemed reliable, however, we make no warranties as to its accuracy.

DOWNTOWN PHOENIX

N 24th Street

E Thomas Road

