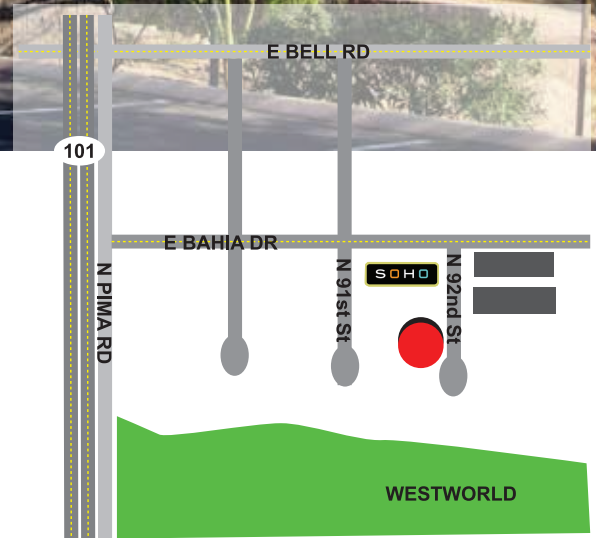


McDowell Mountain Business Park | Office Space

FOR LEASE

±1,490 SQ. FT.

16420 N 92nd Street | Suite E115 | Scottsdale, Arizona 85260



- Reception
- Conference room
- Five (5) offices
- Copy/file room
- Easy access to Loop 101

For further property information or to schedule a tour please contact:



Randy Shell
Designated Broker
C 480.694.4100
O 480.443.3992

randy@shellcommercial.com

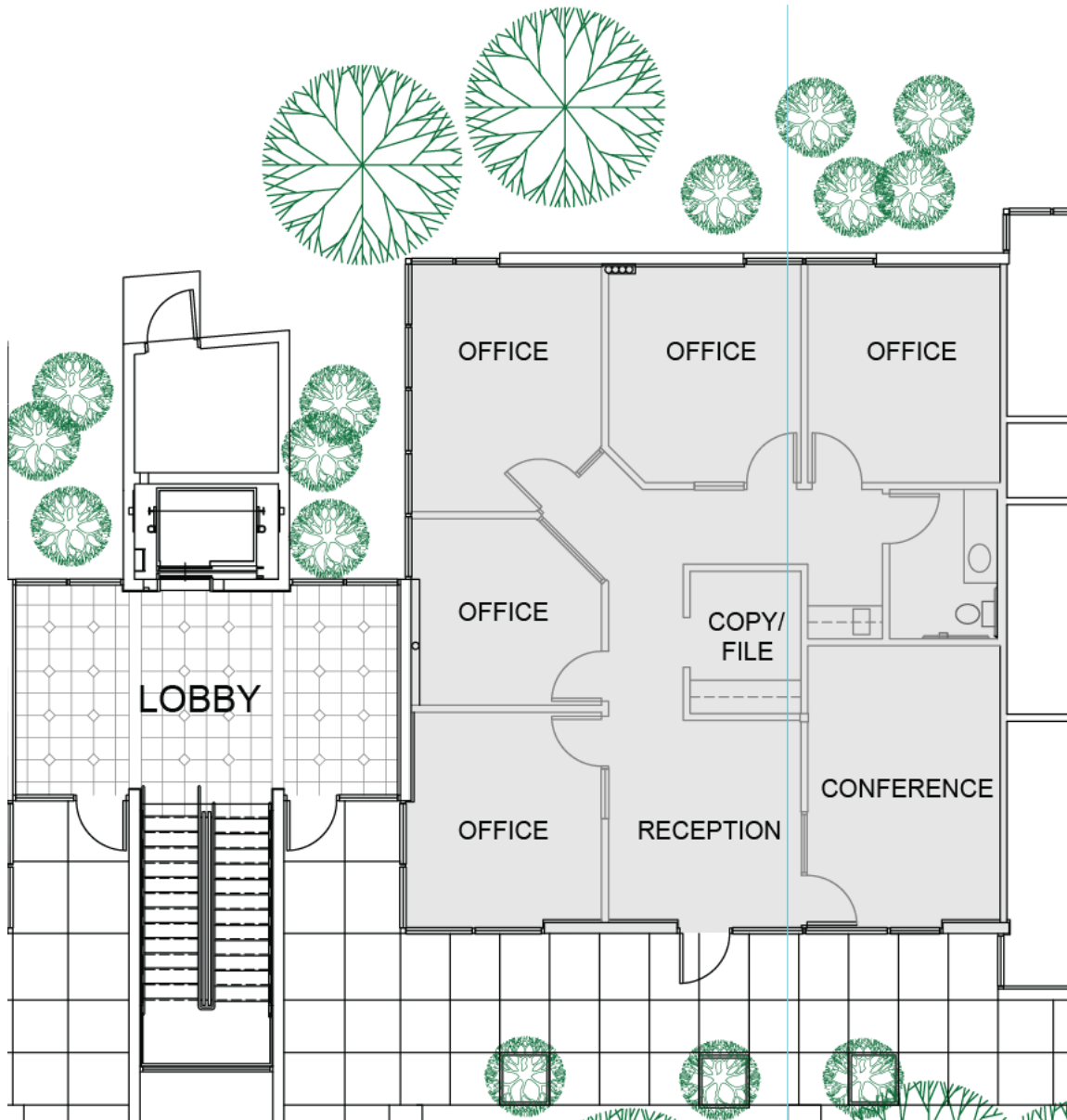
 **SHELL**
Commercial Investment Real Estate
Serving Scottsdale Airpark & Greater Phoenix

480.443.3992 shellcommercial.com



16410 N 91st Street | Suite 112 | Scottsdale, Arizona 85260

The above is subject to prior sales and leasing. This information has been secured from sources we believe to be reliable, but we make no representation or warranties, expressed or implied as to the accuracy of this information.

16420 N 92nd Street | Suite E115 | Scottsdale, Arizona 85260**NOT TO SCALE**

All information furnished regarding property for sale, rental or financing is from sources deemed reliable, but no warranty or representation is made to the accuracy thereof and same is submitted to errors, omissions, change of price, rental or other conditions, prior to sale, lease or financing or withdrawal without notice. No liability of any kind is to be imposed on the broker herein. This information has been secured from sources deemed reliable, however, we make no warranties as to its accuracy.

