

McDowell Mountain Business Park | Industrial Space

FOR LEASE

±5,994 SQ. FT.

Office/Warehouse

16413 N 91st Street | Suite C105/110 | Scottsdale, Arizona 85260

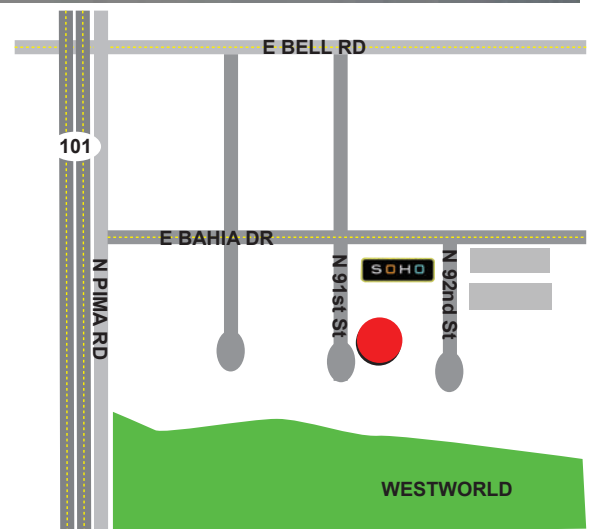


FIRST FLOOR

- Reception
- Five (5) offices, copy/file room, work area
- Break room, restroom
- 100% A/C warehouse w/ office & restroom

SECOND FLOOR MEZZANINE

- One (1) office, conference room
- Work area
- Break room, server room, storage closet
- Restroom



For further property information or to schedule a tour please contact:



Randy Shell

Designated Broker

C 480.694.4100

O 480.443.3992

randy@shellcommercial.com



Serving Scottsdale Airpark & Greater Phoenix

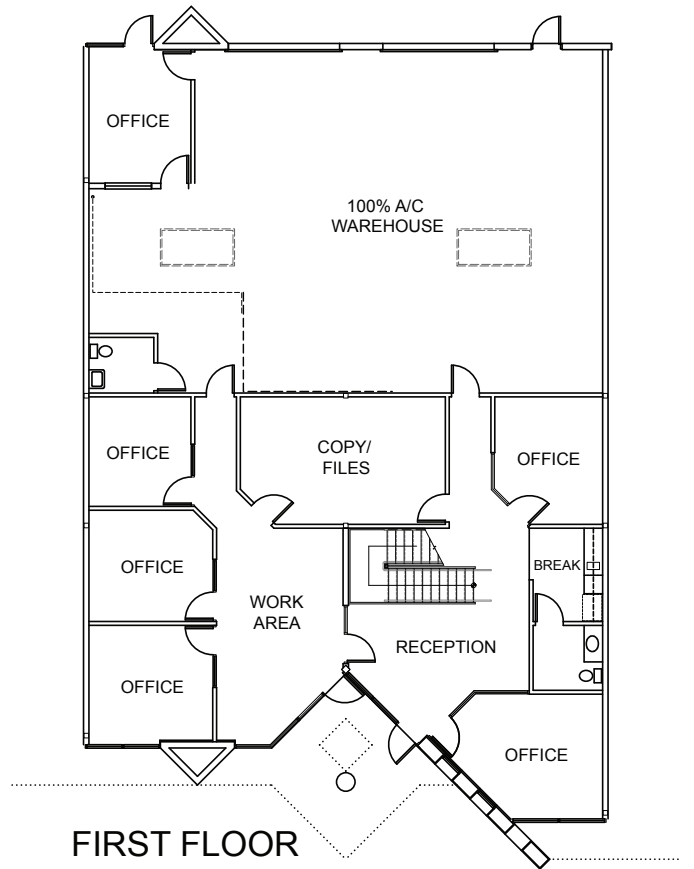
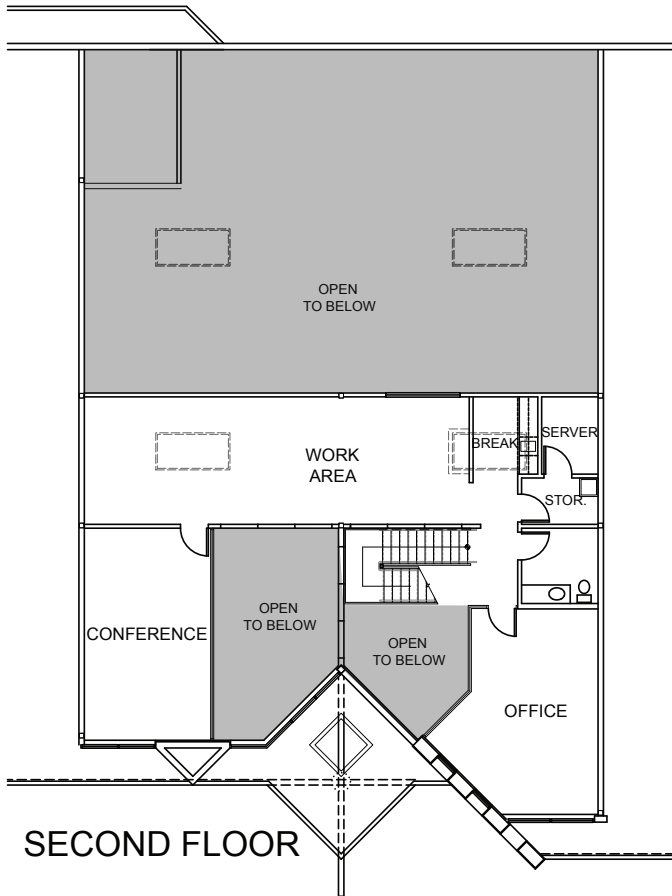
480.443.3992 shellcommercial.com



16410 N 91st Street | Suite 112 | Scottsdale, Arizona 85260

The above is subject to prior sales and leasing. This information has been secured from sources we believe to be reliable, but we make no representation or warranties, expressed or implied as to the accuracy of this information.

16413 N 91st Street | Suite C105/110 | Scottsdale, Arizona 85260



NOT TO SCALE

All information furnished regarding property for sale, rental or financing is from sources deemed reliable, but no warranty or representation is made to the accuracy thereof and same is submitted to errors, omissions, change of price, rental or other conditions, prior to sale, lease or financing or withdrawal without notice. No liability of any kind is to be imposed on the broker herein. This information has been secured from sources deemed reliable, however, we make no warranties as to its accuracy.