

McDowell Mountain Business Park | Office/Flex Condominium

# FOR LEASE

±4,884 SQ. FT.

16411 N 90th Street | Suites 101/102 | Scottsdale, Arizona 85260



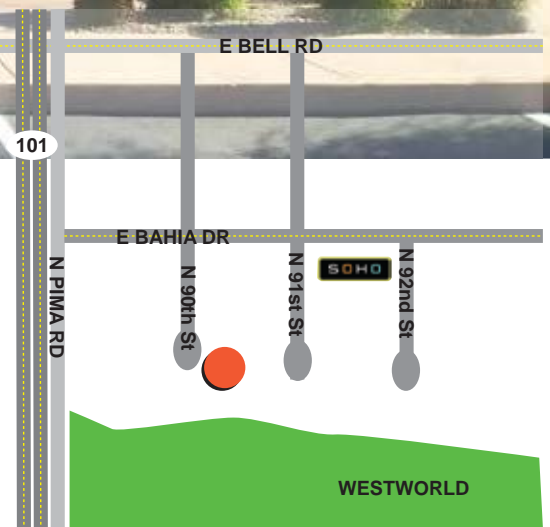
- Reception, One (1) Office
- Large work areas
- Kitchenette / Copy/File room
- Two (2) Restrooms
- Evap-cooled Warehouse w/18' clr ht
- Mezzanine with Three (3) Offices + Work Area

For further property information or to schedule a tour please contact:



**Randy Shell**  
Designated Broker  
C 480.694.4100  
O 480.443.3992

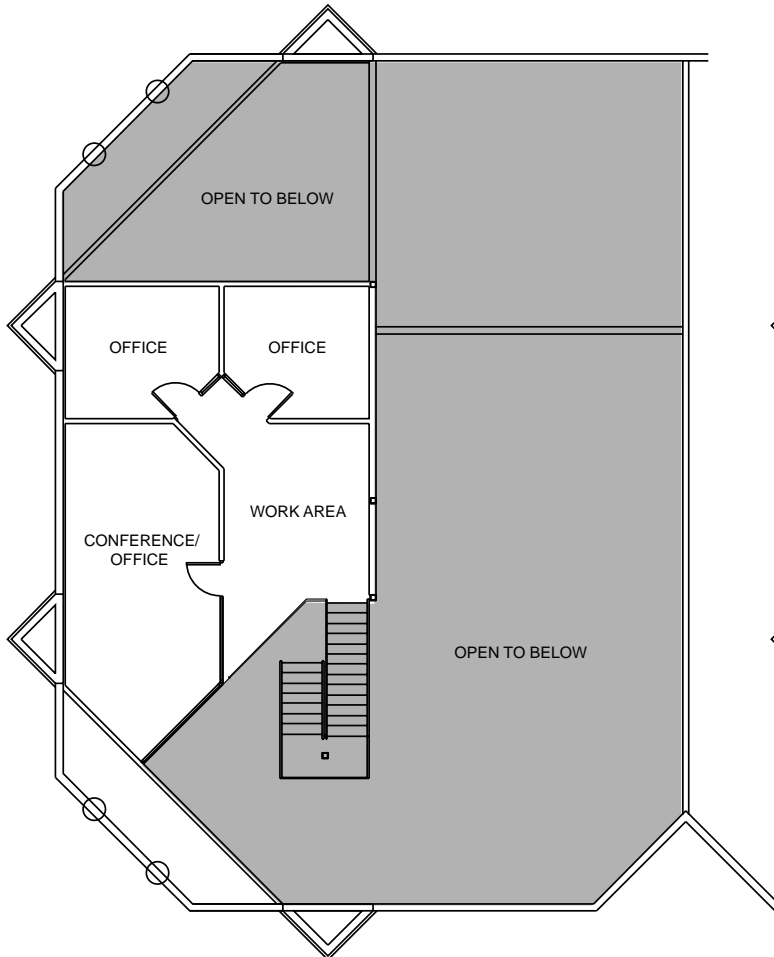
[randy@shellcommercial.com](mailto:randy@shellcommercial.com)



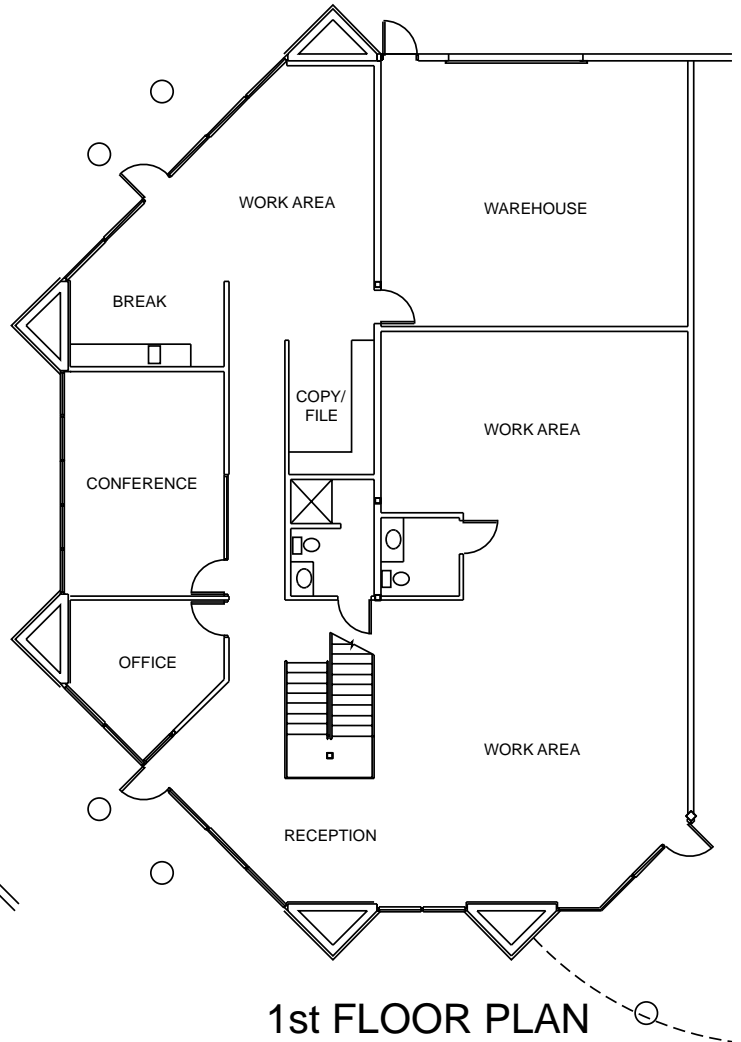
480.443.3992 [shellcommercial.com](http://shellcommercial.com)



16410 N 91st Street | Suite 112 | Scottsdale, Arizona 85260



2nd FLOOR PLAN



1st FLOOR PLAN

**SUITE 101**

OFFICE - 1st	3198 sf
OFFICE - 2nd	993 sf
<u>WAREHOUSE</u>	<u>693 sf</u>
TOTAL	4884 sf

**NOT TO SCALE**

All information furnished regarding property for sale, rental or financing is from sources deemed reliable, but no warranty or representation is made to the accuracy thereof and same is submitted to errors, omissions, change of price, rental or other conditions, prior to sale, lease or financing or withdrawal without notice. No liability of any kind is to be imposed on the broker herein. This information has been secured from sources deemed reliable, however, we make no warranties as to its accuracy.

